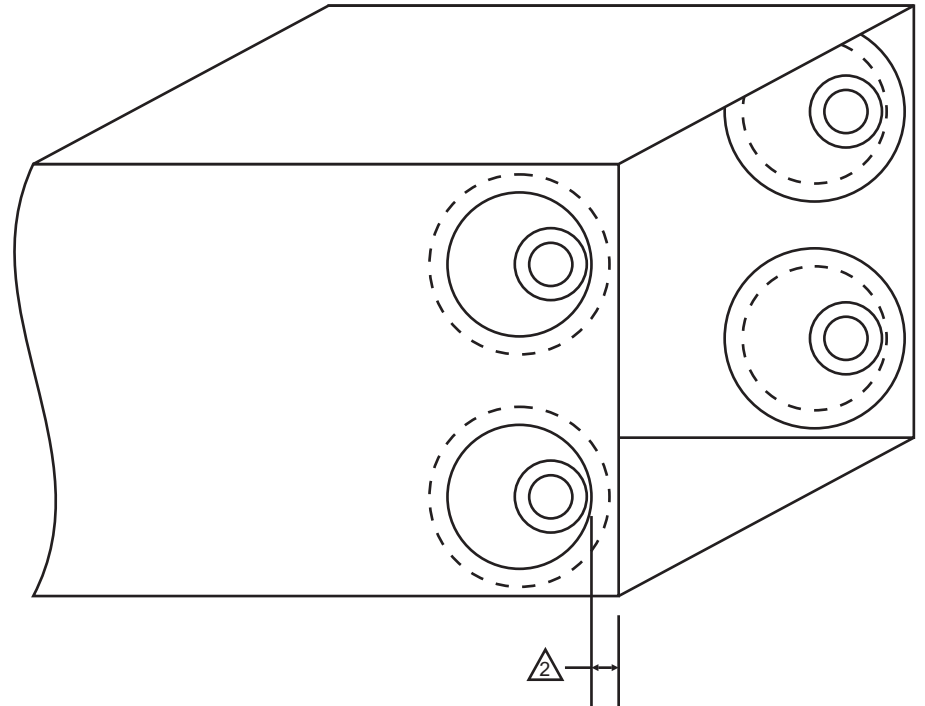
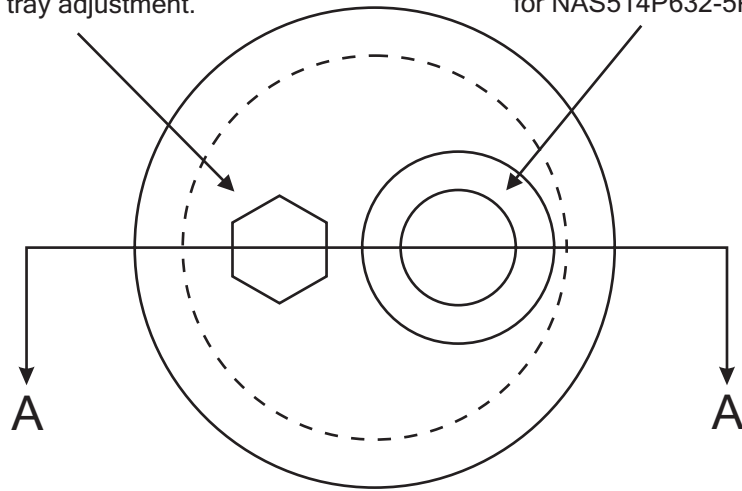


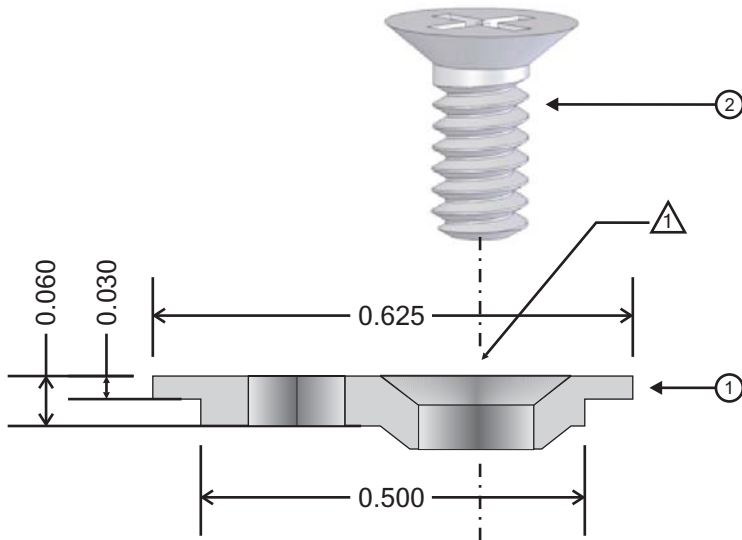
Hole for 1/8" Allen Wrench-
used for tray adjustment.

100 degree countersink
for NAS514P632-5P



△ Minimum 0.500" hole center to tray edge: 0.350"
Minimum edge distance for 0.500" hole to tray edge: 0.10"

Note: use the Radorax RK500 Tray Cam Installation Tool Kit to simplify avionics tray modification.



A-A

△ Use the included NAS514P632-5P screws when mounting trays with Tray Cams. Radorax Tray Mount kits are supplied with -4P screws for mounting trays. These are too short for use with Tray Cams.

Revisions			
REV	DESCRIPTION	DATE	APPROVED

1	NAS514P632-5P	STRUCTURAL TRAY SCREW - 100° C-Sunk	Steel	6-32 x .3125	2	
1	RP5000-P	TRAY CAM	Stainless	.625 x .060	1	
QTY.	PART NO.	DESCRIPTION	MATERIAL	SIZE/SPECIFICATION	ITEM NO.	
N/A	FAA/PMA	UNLESS OTHERWISE SPECIFIED DIMENSIONS ARE IN INCHES TOLERANCES ARE:	Radorax Aviation Systems www.radorax.com			
		DECIMALS .XX ± .01 ANGLES ± 0.25° XXX ± .005	CONTRACT NO.	APPROVALS	DATE	
		MATERIAL	DRAWN M. J. Landes	10/02/03	TITLE RADIORAX TRAY CAM	DWG. CODE -
		FINISH	CHECKED V. D. L'Esperance	10/02/03	ENGINEER	REV. NC
NEXT ASSY APPLICATION	USED ON	DO NOT SCALE ON DRAWING	APPROVED V. D. L'Esperance	10/02/03	SCALE 4:1	
			SIZE D	CAGE CODE	DWG. NO. RKD5000-3	
			FILE: RKD5000-3revNC.cdr	SHEET	1 of 1	